

RAILWAY HOUSE
2 REMPSTONE ROAD
SWANAGE
DORSET
BH19 1DW
Opposite the Steam Railway Station



Tel: 01929 423333
(24 hours)
Web: www.milesandson.co.uk
Email: property@milesandson.co.uk



Bell Street, Swanage, Dorset BH19 2RY

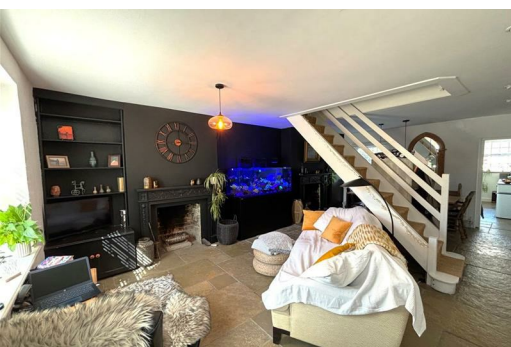
A well-presented character Victorian semi-detached house convenient for local amenities 1 miles west of Swanage town centre. 4 bedrooms., open plan lounge, and dining room, kitchen, bathroom/W.C., gas central heating, double glazing, front garden, paved rear garden with timber outbuilding/studio, some hill views. **VENDOR SUITED!**

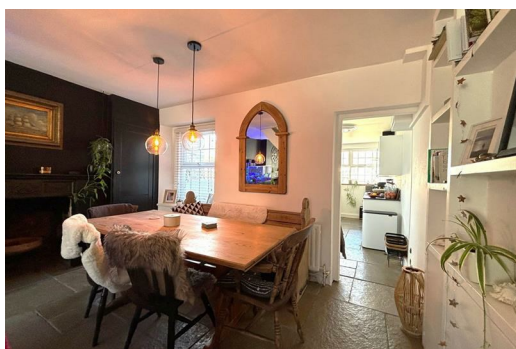
- Well-presented character semi-detached house
- Kitchen
- Double glazed windows
- **VENDOR SUITED!**
- 3 bedrooms
- Bathroom/W.C.
- Front garden. Enclosed paved rear garden
- Open plan lounge, and dining room
- Gas central heating
- Timber outbuilding/studio

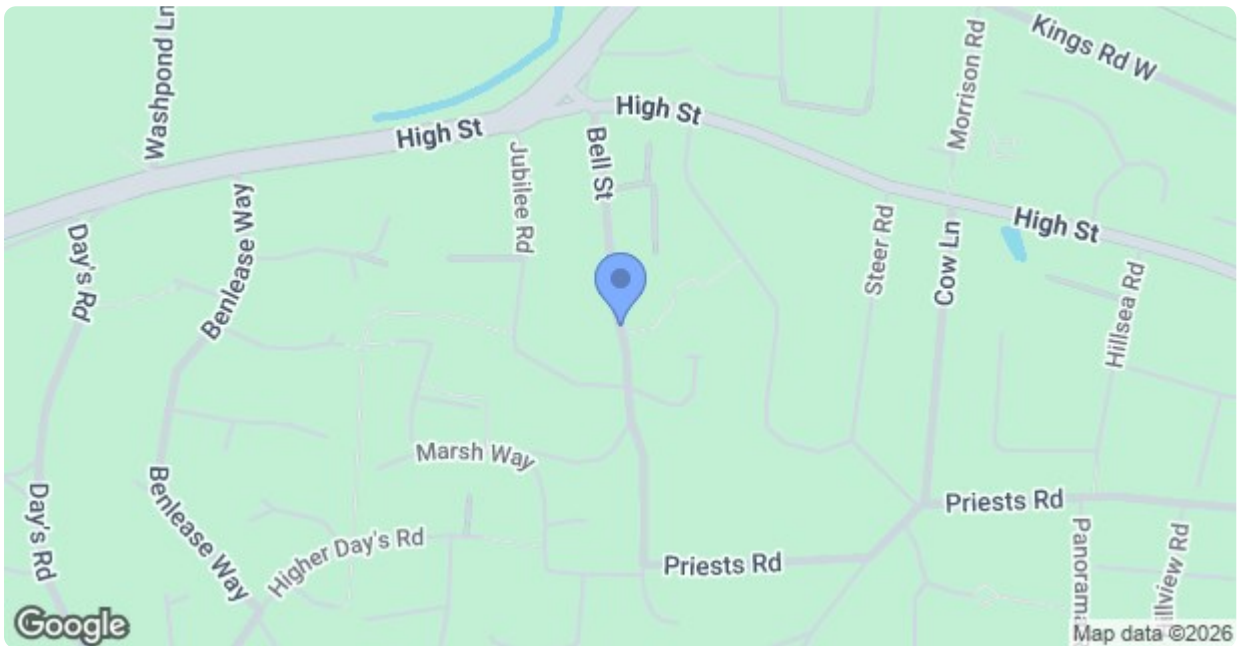
Asking Price £485,000

Bell Street, Swanage, Dorset BH19 2RY

* Awaiting full particulars *







Energy Efficiency Rating		
	Current	Potential
<i>Very energy efficient - lower running costs</i>		
(92 plus) A		
(81-91) B		
(69-80) C		
(55-68) D		
(39-54) E		
(21-38) F		
(1-20) G		
<i>Not energy efficient - higher running costs</i>		
England & Wales	EU Directive 2002/91/EC	